

**BUSINESS INDICATORS**AUSTRALIAN
CAPITAL
TERRITORY

EMBARGO: 11:30AM (CANBERRA TIME) MON 19 APR 1999

C O N T E N T S

	<i>page</i>
Notes	2
Summary of findings	3
Selected business indicators	5
FEATURE ARTICLE	
Persons not in the Labour Force in the ACT	6
TABLES	
1 Business expectations: Sales, June quarter 1999/ March quarter 2000, expected aggregate change	9
2 Business indicators, April 1999	10
3 ACT in relation to the rest of Australia	13
4 ACT in relation to the rest of Australia—percentage change	14

- For more information about these and related unpublished statistics, contact Will Blythe on Canberra 02 6205 0032, or Marianita Jose on Canberra 02 6207 0277, or any ABS office shown on the back cover of this publication.

NOTES

FORTHCOMING ISSUES

<i>ISSUE</i>	<i>RELEASE DATE</i>
May 1999	25 May 1999
June 1999	23 June 1999
July 1999	20 July 1999
August 1999	23 August 1999
September 1999	20 September 1999
October 1999	18 October 1999

SYMBOLS AND OTHER USAGES

ACT	Australian Capital Territory
n.a.	not available
n.p.	not available for publication
p	preliminary
*	Represents data with a standard error of greater than 25%. Caution should be exercised when using this data.
—	nil or rounded to zero

Dalma Jacobs
Regional Director, Australian Capital Territory

SUMMARY OF FINDINGS

UPDATED SERIES

Series updated since the March 1999 issue are: population, labour force, job vacancies, industrial disputes, retail trade, housing finance, building approvals, motor vehicle registrations, tourist accommodation, business expectations, and state accounts. The feature article on pages 6–8 is on Persons not in the Labour Force in the ACT.

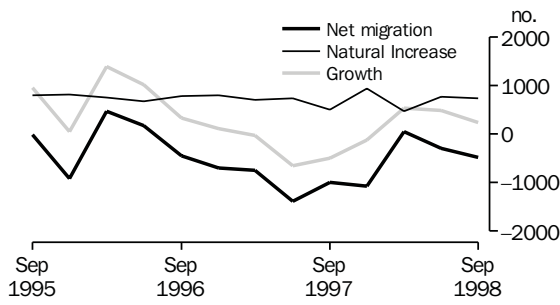
NOTABLE MOVEMENTS

Population	The estimated resident population of the ACT in the September quarter 1998 was 308,659, an increase of 248 persons (0.1%) since the June quarter 1998 and an increase of 1,144 persons since the September quarter 1997. The population for the 12 months to September 1998 in the ACT showed an increase of 0.4%, while Australia's population grew by 1.3% during the same period. For the September quarter 1998, net migration showed a loss of 487 residents, with net interstate migration from the ACT being negative. Net interstate migration has been negative since September quarter 1996.
Labour force	In March 1999, the trend unemployment rate for the ACT was 5.9%, the same level compared to the previous month, and the lowest rate since November 1990. Trend employment increased by 0.2% (to 157,200 persons) and the trend participation rate remained stable at 70.7% compared to the previous month. Nationally, trend employment increased by 0.1% from the previous month and the trend unemployment rate remained steady at 7.4%.
Job vacancies	There were 2,300 job vacancies in the ACT for the February quarter 1999, recording a 53.3% increase from the previous quarter and an increase of 130.0% from the corresponding quarter of the previous year. Nationally, job vacancies for February 1999 fell by 14.0% since the November quarter 1998 and decreased by 11.8% from the corresponding quarter of the previous year.
Industrial disputes	For the 12 months ended December 1998 there were 36 working days lost per thousand employees in the ACT compared to 72 days nationally. In comparison with the 12 months ended December 1997, there was an increase of 140.0% for the ACT and a decrease of 4.0% nationally in the number of working days lost per thousand employees.
Retail turnover	The trend estimate for retail turnover in the ACT for February 1999 was \$226.0 million, an increase of 0.8% from the previous month and was up 4.6% compared to twelve months ago. The national trend retail turnover recorded an increase of 0.8% from the previous month and was up 6.8% compared to a year ago.
Housing finance	The trend number of dwelling units financed (including refinancing) in the ACT in February 1999 was 806, an increase of 2.5% from the previous month. The trend estimate for the value of commitments in the ACT was \$100 million, an increase of \$4 million from the previous

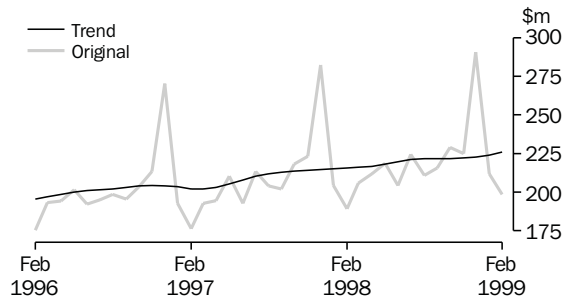
Housing finance <i>continued</i>	<p>month. Refinancing of existing dwellings comprised 17.0% of the total value of dwelling units financed in February 1999, a 23.1% increase from the previous month. Nationally, the trend number of dwelling units financed (including refinancing) during February 1999 was 40,036, an increase of 1.0% from the previous month, while the trend estimate for the value of commitments increased to \$5,168 million (up 1.8%) from the previous month.</p>
Building approvals	<p>The trend number of dwelling units approved in the ACT increased by 7.5% to 271 dwelling units in February 1999. Nationally, the trend number of dwelling units approved increased by 0.7% to 13,032 dwelling units in February 1999.</p> <p>The value of non-residential building approvals in the ACT was \$86.0 million in February 1999, an increase of \$83.8 million from the previous month. This increase was due mainly to large non-residential building approvals in Acton. There has been an increase of \$61.9 million (up 256.8%) compared to February 1998. Nationally, the value of non-residential building approvals increased by 19.1% from the previous month and was up 2.7% from February 1998.</p>
Motor vehicle registration	<p>The trend estimate for ACT new motor vehicle registrations in February 1999 was 1,198, down 0.7% from the previous month, and down 17.5% compared to February 1998. Nationally, the trend for total new motor vehicle registrations in February 1999 recorded a 0.3% decrease from the previous month, and was up 1.6% compared to February 1998.</p>
Tourist accommodation	<p>The room occupancy rate for ACT hotels, motels and guest houses in the December quarter 1998 was 58.9%, an increase of 0.9% from the previous quarter and a decrease of 5.4% compared to December quarter 1997. Nationally, the room occupancy rate increased 1.2% from the previous quarter and decreased 0.7% compared to December quarter 1997.</p> <p>Takings from accommodation were \$24.4 million for the December quarter 1998 in the ACT, up 8.4% from the previous quarter and an increase of 1.7% compared to December quarter 1997. Nationally, takings from accommodation decreased by 7.8% from the previous quarter and increased by 5.7% from the corresponding quarter of the previous year to \$1,043.2 million.</p>
Business expectations	<p>Business expectations in the ACT indicate a 0.4% increase in expected income from the sales of goods and services in the short term for the June quarter 1999. Nationally, there is an expected short term increase of 1.8% in the June quarter 1999. In the medium term (March quarter 1999 to March quarter 2000), a growth of 1.7% in sales is expected for the ACT, while a medium term increase of 2.3% is expected nationally.</p>
State final demand	<p>In the ACT, State Final Demand (chain volume measure) grew by 4.3% to \$17,954 million in 1997–98 compared to \$17,215 million in 1996–97. Gross State Product grew by 4.3% to \$11,943 million in 1997–98 compared to the previous financial period. Nationally, Domestic Final Demand (chain volume measure) grew by 5.3% in 1997–98, while Gross Domestic Product grew by 4.6% in 1997–98.</p>

SELECTED BUSINESS INDICATORS

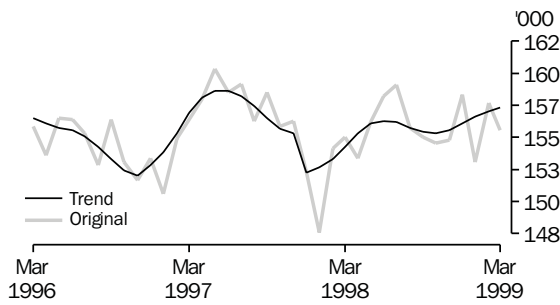
COMPONENTS OF POPULATION GROWTH



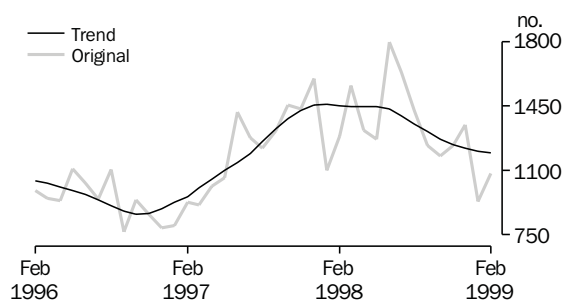
RETAIL TURNOVER



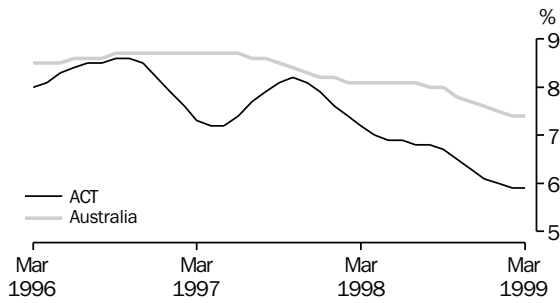
LABOUR FORCE—EMPLOYMENT



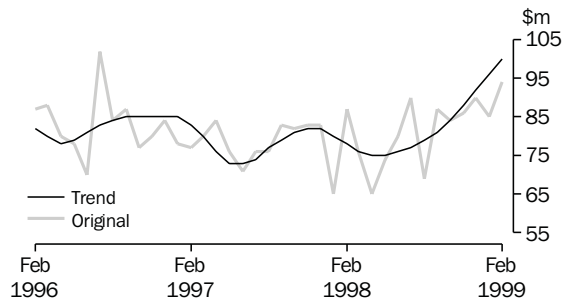
NEW MOTOR VEHICLE REGISTRATIONS



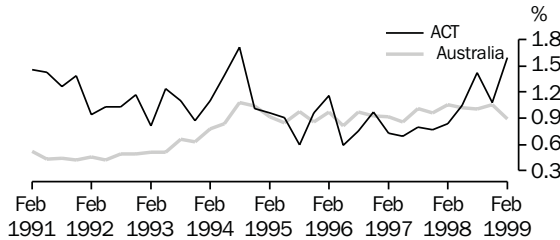
LABOUR FORCE—TREND UNEMPLOYMENT RATE



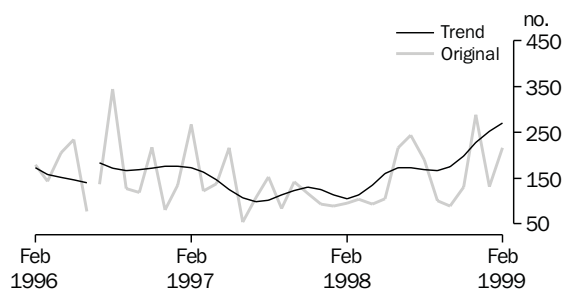
HOUSING FINANCE



JOB VACANCY RATES, ACT AND AUSTRALIA—1991 TO 1999



BUILDING APPROVAL—DWELLING UNITS APPROVED



Notes: Job vacancy rate is calculated by expressing the number of job vacancies as a percentage of the number of employees plus vacancies.

Note: For the period July to December 1996, 165 dwelling units and total building work of \$40.5 million (16%) had been incorrectly omitted from data reported to ABS. All series for the ACT have been revised from July 1996 and a trend break has been included in the graph.

In the ACT at September 1998 there were an estimated 218,342 persons aged 15–69 years. There were 167,540 persons in the labour force, comprised of 156,549 employed persons and 10,990 unemployed persons. There were an estimated 50,802 persons not in the labour force.

Persons who are not in the labour force are those who are neither employed nor unemployed. Persons not in the labour force can be considered marginally attached to the labour force if they:

- want to work and are actively looking for work but not available to start in the reference week; or
- want to work and are not actively looking for work but available to start work within four weeks.

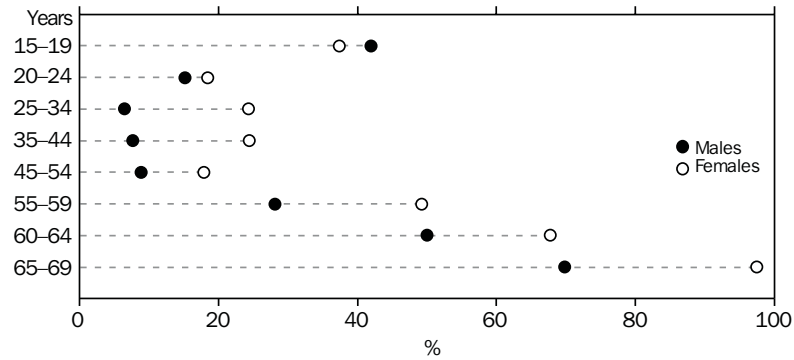
There is an expectation that many of these people will move into the labour force in the short term, or could do so if labour market conditions improved. On the other hand, persons not in the labour force are not marginally attached if they:

- do not want to work; or
- want to work but are not actively looking and not available to start work within four weeks.

In September 1998, the 50,802 persons aged 15–69 years in the ACT who were not in the labour force represented 23.3% of the civilian population in this age group. Of those not in the labour force, the proportion of females (63.4%) was considerably higher than males (36.6%). Nationally, 27.8% of the civilian population aged 15–69 years were not in the labour force in September 1998.

The proportion of persons not in the labour force generally rises with age for both males and females. Notable exceptions are the 15–24 years age group, where high levels of educational participation are present, and females during their main child-bearing and child-caring years (25–44). There were higher proportions of females than males not in the labour force in all age groups, except with the 15–19 years age group. The proportion of females not in the labour force ranged from 17.9% for the 45–54 years age group to 97.4% for the 65–69 years age group. The proportion of males not in the labour force ranged from 6.5% for the 25–34 years age group to 69.8% for the 65–69 years age group.

PERSONS NOT IN THE LABOUR FORCE, BY AGE—SEPTEMBER 1998



Source: *Persons Not in the Labour Force, Australia* (Cat. no. 6220.0).

Persons Marginally Attached

Of the 15,251 persons marginally attached to the labour force in September 1998, 90.3% were not actively looking for work but available to start work within four weeks, and 9.7% wanted to work and were actively looking for work. There were 6,255 males and 8,995 females with marginal attachment to the labour force, with 5,445 males and 8,322 females not actively looking for work but available to start work within four weeks. The main reason for not actively looking for work reported by males in this group was 'attending an educational institution' (41.5%). The most commonly reported reasons for females were 'childcare' (29.6%) and 'attending an educational institution' (18.9%). Nationally, 93.6% of the persons marginally attached to the labour force were not actively looking for work but were available to start work within four weeks.

In the ACT, over 70% of females marginally attached to the labour force would have preferred part-time work while only 18% preferred full-time work. Males in this group were more evenly distributed, with 56.3% preferring part-time and 37.0% preferring full-time work. Nationally, two-thirds of females marginally attached to the labour force would have preferred part-time work, while 17.1% preferred full-time work. For males in this group, 44.4% preferred part-time and 37.8% preferred full-time work.

The number of discouraged job seekers in the ACT in September 1998 was estimated at approximately 1,000 persons (or about 7.0% of all persons with marginal attachment to the labour force). The highest proportion of discouraged job seekers for both males and females fell within the 45-54 years age group (58.8% and 45.6% of discouraged job seekers respectively).

Of males marginally attached to the labour force, 79.0% intended to enter the labour force in the next 12 months, while approximately 13.0% were not sure and approximately 8.0% did not intend to. For females in this group, 51.0% intended to enter the labour force in the next 12 months, 26.7% were not sure, and 22.3% did not intend to.

Persons Not Marginally Attached
There were 35,551 persons without marginal attachment to the labour force. Of these, 30,286 persons (85.2%) did not want to work. Of this group, 10,482 (34.6%) were husbands or wives who did not have dependents present. However, there were 4,062 persons (11.4%) without marginal attachment to the labour force who wanted to work, but were not actively looking for work and were not available to start work within four weeks. Of this group, 36.0% were aged 25–34 years, and 63.7% were females.

The most commonly reported main activities of persons without marginal attachment to the labour force were 'home duties and childcare' (31.9%), 'retired or voluntary inactive' (25.0%) and 'attending an educational education' (24.3%). The most commonly reported activity of males who did not want to work was 'retired or voluntary inactive' (42.4%), the majority of these were aged 60–69 years. In comparison, the most commonly reported activity of females who did not want to work was 'home duties or childcare' (44.7%), the majority of the females were aged 25–54 years.

Main Source of Income
Government pension or cash benefits were the main source of income of 36.7% of the people in the ACT not in the labour force, while nationally, government pension or cash benefits were the main source of income for 50.3% of the people not in the labour force. A significant proportion (43.6%) of persons reported having no income or relying on someone else's income. A further 12.9% of persons not in the labour force in the ACT nominated superannuation or annuity as their main source of income compared with 4.3% nationally. About half (50.3%) of the females not in the labour force reported having no income or relying on someone else's income, while 40.1% of males not in the labour force reported government pension or cash benefits as their main source of income.

In the ACT, more than half (52.7%) of the persons who were marginally attached to the labour force reported that they had no income or relied on someone else's income, and a further 38.4% reported that government pension or cash benefits as their main source of income.

Statistics in this article were obtained from the Persons Not in the Labour Force Survey conducted in September 1998. Data relate to persons aged 15–69 years who were not in the labour force.

1

BUSINESS EXPECTATIONS: SALES

<i>Period</i>	<i>ACT</i>	<i>Aust.</i>
	%	%
Short-term		
Dec qtr 1997–Mar qtr 1998	-1.1	-0.3
Mar qtr 1998–Jun qtr 1998	-0.1	1.7
Jun qtr 1998–Sep qtr 1998	2.7	1.1
Sep qtr 1998–Dec qtr 1998	3.5	1.5
Dec qtr 1998–Mar qtr 1999	-2.7	-0.9
Mar qtr 1999–Jun qtr 1999	0.4	1.8
Medium-term		
Dec qtr 1997–Dec qtr 1998	2.9	3.0
Mar qtr 1998–Mar qtr 1999	2.6	2.6
Jun qtr 1998–Jun qtr 1999	6.9	2.7
Sep qtr 1998–Sep qtr 1999	7.5	2.8
Dec qtr 1998–Dec qtr 1999	2.6	2.7
Mar qtr 1999–Mar qtr 2000	1.7	2.3

Indicator	Unit	ACT			Aust.		
		% change from			% change from		
		Latest figure	Previous period	Same period previous year	Latest figure	Previous period	Same period previous year
POPULATION, VITAL AND LABOUR							
POPULATION, Sep qtr 98	'000	308.7	0.1	0.4	18 813.0	0.3	1.3
Natural increase	no.	735	-5.6	45.3	27 244	-14.4	4.6
Net migration	no.	-487	-65.6	51.4	34 766	98.3	14.5
Total increase	no.	248	-48.9	150.0	62 010	25.6	9.9
LABOUR FORCE, Mar 99							
Original Series							
Employed	'000	155.5	-1.3	0.3	8 697.3	0.6	2.1
Unemployed	'000	11.7	0.9	-12.0	736.4	-5.7	-7.8
Unemployment rate	%	7.0	0.1	-0.9	7.8	-0.5	-0.8
Participation rate	%	70.8	-0.9	-1.2	63.2	-0.1	-0.1
Long-term unemployed, Feb 99	no.	3 207	32.9	-34.9	243 709	1.4	-7.6
Long-term unemployed as percentage of total unemployed	—	27.6	5.4	-6.0	31.2	-0.5	-0.1
Trend series							
Employed	'000	157.2	0.2	1.9	8 700.8	0.1	1.9
Unemployed	'000	9.8	-1.0	-17.6	693.6	-0.8	-7.5
Unemployment rate	%	5.9	—	-1.3	7.4	—	-0.7
Participation rate	%	70.7	—	-0.4	62.9	-0.1	-0.2
WAGE AND SALARY EARNERS, Aug 98							
Trend series							
Public Sector	'000	67.9	-1.0	-1.9	1 460.6	-0.1	-1.0
Private Sector	'000	71.8	2.9	1.7	5 566.6	2.5	3.7
Total	'000	139.7	0.9	-0.1	7 027.2	1.9	2.7
JOB VACANCIES, Feb 99	'000	2.3	53.3	130.0	66.6	-14.0	-11.8
INDUSTRIAL DISPUTES IN PROGRESS, Dec 98							
Working days lost	'000	0.3	—	—	50.5	32.2	107.8
Days lost per '000 employees (year ended Dec 98)	no.	36.0	5.9	140.0	72.0	5.9	-4.0
BUILDING AND CONSTRUCTION							
HOUSING FINANCE, Feb 99							
Secured commitments to individuals for							
Original Series							
Construction of dwellings	\$m	7.0	—	—	750.0	33.7	9.2
Purchase of new dwellings	\$m	2.0	—	-33.3	213.0	26.0	-5.3
Purchase of established dwellings	\$m	64.0	3.2	8.5	3 951.0	20.4	12.0
Re-financing	\$m	16.0	23.1	33.3	793.0	26.9	2.7
Total housing commitments	\$m	94.0	10.6	8.0	4 914.0	22.5	10.7
Seasonally adjusted series							
Total housing commitments	\$m	97.0	-11.0	7.8	5 059.0	-1.9	10.8
Trend series							
Dwelling units financed	no.	806	2.5	18.2	40 036	1.0	0.2
Total housing commitments	\$m	100.0	4.2	28.2	5 168.0	1.8	13.4
BUILDING APPROVALS, Feb 99							
Original series							
Dwelling units	no.	216	63.6	127.4	12 030	21.9	4.0
Value of new residential	\$m	22.9	47.7	106.3	1 354.1	27.8	15.0
Value of residential alterations and additions	\$m	3.1	-3.1	-32.6	224.3	19.0	-6.6
Value of non-residential	\$m	86.0	3 809.1	256.8	1 197.2	19.1	2.7
Value of total building	\$m	112.1	436.4	182.4	2 775.5	23.2	7.4
Trend series							
Dwelling units	no.	271	7.5	155.7	13 032	0.7	-3.1

Indicator	Unit	ACT			Aust.		
		% change from			% change from		
		Latest figure	Previous period	Same period previous year	Latest figure	Previous period	Same period previous year
BUILDING AND CONSTRUCTION continued							
BUILDING COMMENCEMENTS, Sep qtr 98							
New houses	no.	423	77.0	29.4	27 153	3.0	24.4
Value of houses commenced	\$m	50.1	62.7	41.1	3 169.3	3.9	29.7
Value of non-residential building commenced	\$m	54.0	-38.5	-35.0	2 955.7	-17.0	-14.4
Value of total commencements	\$m	127.7	-6.4	-8.9	8 123.8	-6.2	8.9
PRICE INDEXES							
Established house price index, Dec qtr 98	—	127.8	0.9	1.3	129.0	1.7	6.4
ENGINEERING CONSTRUCTION (Sep qtr 98)							
Private sector							
Value of work commenced	\$m	9.5	-31.7	15.9	2 244.3	-10.8	-20.4
Value of work done	\$m	10.8	-14.3	35.0	2 981.9	4.1	27.2
Value of work yet to be done	\$m	13.8	13.1	-38.4	5 906.7	-8.5	-6.2
Value of work done by public sector	\$m	20.7	-31.7	31.8	1 347.4	-32.1	5.9
PRICES, WAGES AND CONSUMER SPENDING							
CONSUMER PRICE INDEX, Dec qtr 98							
Food(a)	—	129.1	1.2	3.4	126.0	1.0	4.0
Housing(a)	—	93.9	0.1	0.2	95.5	0.7	1.4
Transportation(a)	—	126.9	-0.9	-1.6	121.9	-0.3	-1.7
All groups(a)	—	121.7	0.3	1.6	121.9	0.5	1.6
AVERAGE WEEKLY EARNINGS, Nov 98							
Original series							
Males	\$	819.4	-2.4	3.8	722.8	0.1	1.9
Females	\$	612.7	-0.1	3.9	476.0	0.5	2.1
Persons	\$	720.5	-1.2	4.1	603.7	0.1	1.9
Trend series							
Males	\$	829.9	-0.3	4.5	723.9	0.4	2.6
Females	\$	616.4	0.8	4.3	478.3	1.0	2.7
Persons	\$	726.6	0.2	4.7	606.2	0.6	2.7
RETAIL TURNOVER, Feb 99							
Original series							
Food retailing	\$m	76.1	-5.9	0.9	4 497.4	-9.1	5.0
Department stores	\$m	17.0	-30.9	-1.7	748.5	-21.8	4.5
Hospitality and services	\$m	32.9	-1.8	7.9	1 953.1	-8.5	17.1
All other retailing	\$m	72.7	-0.5	10.0	3 472.5	-9.6	5.9
Total	\$m	198.7	-6.3	5.0	10 671.5	-10.2	7.3
Trend series							
Food retailing	\$m	81.1	0.6	0.1	4 849.9	0.6	5.2
Department stores	\$m	25.5	1.2	5.8	1 068.0	0.8	6.8
Hospitality and services	\$m	37.3	-0.3	10.0	2 098.8	1.2	12.9
All other retailing	\$m	82.1	1.5	6.6	4 013.4	0.9	5.6
Total	\$m	226.0	0.8	4.6	12 030.1	0.8	6.8

(a) Base year: 1989-90=100.0.

Indicator	Unit	ACT			Aust.		
		Latest figure	Previous period	Same period previous year	% change from		Same period previous year
					Latest figure	Previous period	
TOURISM AND TRANSPORT							
HOTELS, MOTELS AND GUEST HOUSE ACCOMMODATION, Dec qtr 98							
Original series							
Room nights	'000	242.9	n.a.	-1.4	9 904.4	2.7	4.9
Takings at current prices	\$m	24.4	n.a.	1.7	1 043.2	n.a.	5.7
Guest arrivals	'000	195.0	n.a.	n.a.	7 973.9	n.a.	n.a.
Guest nights	'000	419.4	n.a.	n.a.	17 560.1	n.a.	n.a.
Room occupancy rate	%	58.9	n.a.	-5.4	59.4	1.2	-0.7
NEW MOTOR VEHICLE REGISTRATIONS, Feb 99							
Motor vehicles	no.	1 087	16.6	-15.6	60 330	20.4	0.2
Seasonally adjusted motor vehicles	no.	1 173	1.2	-15.6	63 913	-1.5	0.1
Trend motor vehicles	no.	1 198	-0.7	-17.5	65 278	-0.3	1.6
AGGREGATE INDICATORS							
STATE ACCOUNTS, 1997-98(a)							
Original series (chain volume measures)(b)							
Household final consumption expenditure	\$m	6 074	5.9	n.a.	327 236	4.6	n.a.
General government final consumption expenditure	\$m	10 328	3.6	n.a.	100 640	4.1	n.a.
Private gross fixed capital formation	\$m	1 430	n.a.	n.a.	109 937	n.a.	n.a.
Public gross fixed capital formation	\$m	119	n.a.	n.a.	20 901	n.a.	n.a.
State final demand	\$m	17 954	4.3	n.a.	558 750	5.3	n.a.
Gross state product	\$m	11 943	4.3	n.a.	555 689	4.6	n.a.
Original series (at current prices)							
Household final consumption expenditure	\$m	6 150	7.3	n.a.	332 311	6.2	n.a.
General government final consumption expenditure	\$m	10 393	4.3	n.a.	102 354	5.9	n.a.
Private gross fixed capital formation	\$m	1 421	44.4	n.a.	111 015	12.4	n.a.
Public gross fixed capital formation	\$m	142	-73.2	n.a.	20 915	-5.6	n.a.
State final demand	\$m	18 105	5.2	n.a.	566 595	6.8	n.a.
Gross state product	\$m	12111	5.8	n.a.	563 517	6.1	n.a.

(a) Quarterly state final demand details are released as a special data service (Product no. 5206.0.40.001).

(b) Reference year for chain volume measures is 1996-97.

Source: ABS publications: Australia Demographic Statistics (Cat. no. 3101.0), Australian National Accounts: State Accounts (Cat. no. 5242.0), Housing Finance for Owner Occupation, Australia (Cat. no. 5609.0), Labour Force, Australia, Preliminary (Cat. no. 6202.0), Labour Force, Australia (Cat. no. 6203.0), Industrial Disputes, Australia (Cat. no. 6321.0), Job Vacancies and Overtime, Australia (Cat. no. 6354.0), Consumer Price Index (Cat. no. 6401.0), Price Index of Materials Used in Housing Building (Cat. no. 6408.0), House Price Indexes: Eight Capital Cities (Cat. no. 6416.0), Retail Trade, Australia (Cat. no. 8501.0), Tourism Indicators, Australia (Cat. no. 8634.0), Tourism Accommodation, ACT (Cat. no. 8635.8), Building Approvals, Australia (Cat. no. 8731.0), Building Activity, Australia (Cat. no. 8752.0), New Motor Vehicle Registration, Australia (Cat. no. 9301.0).

Indicator	Unit	Latest period	NSW	Vic.	Qld	SA	WA	Tas.	NT	ACT	Aust.
POPULATION	'000	Sep qtr 98	6 363.0	4 674.9	3 471.5	1 488.8	1 840.4	471.6	190.9	308.7	18 813.0
LABOUR FORCE											
Employed persons (trend)	'000	Mar 99	2 898.5	2 172.2	1 632.6	658.9	843.0	192.6	96.0	157.2	8 700.8
Unemployment rate (trend)	%	Mar 99	6.9	7.3	7.8	9.0	7.0	10.6	4.2	5.9	7.4
WAGE AND SALARY EARNERS											
Public sector (trend)	'000	Aug 98	471.2	309.3	280.0	120.6	148.5	40.7	22.3	67.9	1 460.6
Private sector (trend)	'000	Aug 98	1 936.2	1 440.6	989.4	401.3	567.5	112.4	47.5	71.8	5 566.6
Total public and private sector (trend)	'000	Aug 98	2 407.4	1 749.9	1 269.4	521.9	716.0	153.1	69.8	139.7	7 027.2
STATE ACCOUNTS, 1997-98											
Gross state product (chain volume measures)	\$m	1997-98	196 676	141 219	90 188	38 092	60 695	11 095	5 779	11 943	555 689
Gross state product (current prices)	\$m	1997-98	199 448	143 209	91 459	38 629	61 550	11 251	5 860	12 111	563 517
BUILDING APPROVALS											
Dwelling units approved	no.	Feb 99	3 846	3 517	2 020	607	1 547	109	168	216	12 030
Dwelling units approved (trend)	no.	Feb 99	4 314	3 386	2 331	641	1 673	113	177	271	13 032
Value of non-residential building approved	\$m	Feb 99	428.9	255.7	130.1	118.4	156.3	4.2	17.5	86.0	1 197.2
Value of all buildings approved	\$m	Feb 99	990.4	731.1	352.3	189.0	344.0	17.6	39.0	112.1	2 775.5
ENGINEERING CONSTRUCTION											
Value of engineering construction work done	\$m	Sep qtr 98	1 239.0	822.6	985.8	244.7	901.4	53.6	50.7	31.6	4 329.3
AVERAGE WEEKLY EARNINGS											
Full-time adult ordinary time (trend)	\$	Nov 98	770.2	736.5	695.7	702.8	755.0	696.5	749.3	854.5	742.6
RETAIL TRADE											
Retail turnover (trend)	\$m	Feb 99	4 191.4	2 850.0	2 259.9	892.2	1 203.1	272.8	130.0	226.0	12 030.1
HOTELS, MOTELS & GUEST HOUSE ACCOMMODATION											
Room nights occupied	'000	Dec qtr 98	3 210.5	1 602.6	2 793.0	562.6	914.8	284.7	293.2	221.3	8 724.6
Room occupancy rate	%	Dec qtr 98	59.8	58.7	60.6	60.8	57.7	56.2	52.8	59.1	54.6
NEW MOTOR VEHICLE REGISTRATIONS											
Trend	no.	Feb 99	22 164	17 118	12 523	4 060	6 276	1 225	714	1 198	65 278
	Unit	Latest period	Syd.	Melb.	Bris.	Adel.	Perth	Hob.	Dar.	Canb.	Aust.
CONSUMER PRICE INDEX											
Food(b)		Dec qtr 98	126.8	124.3	125.0	128.2	127.6	125.0	126.9	129.1	126.0
Housing(b)		Dec qtr 98	102.6	86.6	101.3	91.9	90.4	95.4	114.5	93.9	95.5
Transportation(b)		Dec qtr 98	123.4	120.6	121.0	121.3	122.2	118.6	119.8	126.9	121.9
All Groups(b)		Dec qtr 98	122.4	120.8	123.0	123.6	120.2	122.7	122.7	121.7	121.9
Average retail prices (cents)											
Milk, carton, supermarket sales	1 litre	Dec qtr 98	116	135	120	132	135	125	122	115	n.a.
Bread, white loaf, sliced, supermarket sales	680 g	Dec qtr 98	210	201	199	167	196	204	217	210	n.a.
Beef, rump steak	1 kg	Dec qtr 98	1 163	1 031	1 041	1 156	1 018	881	1 229	1 166	n.a.
Chicken, frozen	1 kg	Dec qtr 98	366	345	338	332	349	380	351	346	n.a.
Potatoes	1 kg	Dec qtr 98	127	137	134	86	135	77	123	149	n.a.
Coffee, instant (jar)	150 g	Dec qtr 98	573	610	600	563	679	671	605	615	n.a.
Scotch nip, public bar	30 ml	Dec qtr 98	353	316	270	362	384	264	327	270	n.a.
Private motoring petrol											
Leaded	1 litre	Dec qtr 98	71.1	68.3	61.8	69.5	70.8	74.8	77.2	74.0	n.a.
Unleaded	1 litre	Dec qtr 98	68.8	66.1	59.5	67.2	68.6	72.8	75.2	71.7	n.a.

(a) State estimates are not comparable to national estimates from the June quarter 1995 due to revised methodology used in *Australian National Accounts, State Accounts* (Cat. no. 5242.0).

(b) Reference year for chain volume measures is 1996-97.

<i>Indicator</i>	<i>Latest period</i>	<i>NSW</i>	<i>Vic.</i>	<i>Qld</i>	<i>SA</i>	<i>WA</i>	<i>Tas.</i>	<i>NT</i>	<i>ACT</i>	<i>Aust.</i>
POPULATION	Sep qtr 98	0.3	0.3	0.4	0.1	0.5	-0.1	0.5	0.1	0.3
LABOUR FORCE										
Employed persons (trend)	Mar 99	0.1	0.1	0.1	0.1	—	-0.2	0.4	0.2	0.1
Unemployment rate (trend)	Mar 99	—	-0.1	-0.2	-0.1	-0.1	0.2	0.1	—	—
WAGE AND SALARY EARNERS										
Pubic sector (trend)	Aug 98	-0.6	-1.1	0.5	2.3	1.2	-1.0	2.3	-1.0	-0.1
Private sector (trend)	Aug 98	1.2	0.9	7.1	4.1	3.0	-2.2	2.6	2.9	2.5
Total public and private sector (trend)	Aug 98	0.9	0.6	5.6	3.7	2.6	-1.9	2.3	0.9	1.9
STATE ACCOUNTS(a)										
Gross state product (chain volume measures) (original)(b)	1997-98	4.6	3.8	4.9	4.6	6.5	4.0	5.1	4.3	4.6
Gross state product (current prices) (original)	1997-98	6.0	5.3	6.4	6.1	8.0	5.5	6.5	5.8	6.1
BUILDING APPROVALS										
Dwelling units approved (original)	Feb 99	9.8	47.3	9.9	36.7	18.4	-6.8	20.9	63.6	21.9
Dwelling units approved (trend)	Feb 99	-0.6	1.7	-2.6	2.9	0.9	-1.7	-3.8	7.5	0.7
Value of non-residential building approved	Feb 99	44.4	38.5	-35.8	74.1	-20.7	-90.8	143.1	3 809.1	19.1
Value of all buildings approved	Feb 99	31.0	42.8	-9.9	53.5	-5.8	-70.6	56.0	436.4	23.2
ENGINEERING CONSTRUCTION										
Value of engineering construction work done	Sep qtr 98	-21.3	-9.7	-8.1	-18.6	9.0	-22.7	0.6	-26.3	-10.7
AVERAGE WEEKLY EARNINGS										
Full-time adult ordinary time (trend)	Nov 98	1.4	0.8	—	1.3	1.2	0.4	0.4	0.1	1.0
RETAIL TRADE										
Retail turnover (trend)	Feb 99	1.1	0.6	0.6	0.4	0.7	0.8	0.4	0.8	0.8
HOTELS, MOTELS & GUEST HOUSE ACCOMMODATION										
Room nights occupied (trend)	Dec qtr 98	11.1	13.2	17.7	17.3	11.0	26.0	-0.6	-8.9	-3.7
Room occupancy rate (original)	Dec qtr 98	3.5	4.8	6.5	7.2	3.2	11.5	-1.4	-5.7	-3.4
NEW MOTOR VEHICLE REGISTRATIONS										
Trend	Feb 99	-0.4	0.3	-0.8	-0.5	-0.3	-0.6	0.7	-0.7	-0.3

	<i>Latest period</i>	<i>Syd.</i>	<i>Melb.</i>	<i>Bris.</i>	<i>Adel.</i>	<i>Perth</i>	<i>Hob.</i>	<i>Dar.</i>	<i>Canb.</i>	<i>Aust.</i>
CONSUMER PRICE INDEX										
Food	Dec qtr 98	1.4	0.6	0.9	1.8	0.9	0.2	120.6	1.2	1.0
Housing	Dec qtr 98	0.1	1.5	0.3	0.8	0.9	-0.2	0.5	0.1	0.7
Transportation	Dec qtr 98	-0.2	-0.3	0.1	-0.4	-0.3	-1.5	-0.7	-0.9	-0.3
All Groups	Dec qtr 98	0.4	0.3	0.4	0.5	0.5	-0.1	0.5	0.3	0.5
Average retail prices (cents)										
Milk, carton, supermarket sales	Dec qtr 98	—	—	0.8	3.9	—	-0.8	—	0.0	n.a.
Bread, white loaf, sliced, supermarket sales	Dec qtr 98	-2.8	—	2.1	-1.2	-4.4	-2.4	3.3	0.0	n.a.
Beef, rump steak	Dec qtr 98	-0.1	-1.6	-2.7	4.2	-3.3	-14.5	1.7	0.3	n.a.
Chicken, frozen	Dec qtr 98	10.2	1.8	15.0	-9.5	3.9	7.6	-10.0	-4.2	n.a.
Potatoes	Dec qtr 98	17.6	23.4	17.5	38.7	3.8	6.9	13.9	24.2	n.a.
Coffee, instant (jar)	Dec qtr 98	-13.4	0.3	-2.8	-1.2	16.5	10.4	-1.6	4.1	n.a.
Scotch nip, public bar	Dec qtr 98	4.1	0.3	2.3	0.8	1.9	-0.4	—	2.7	n.a.
Private motoring petrol										
Leaded	Dec qtr 98	-2.1	-2.1	0.7	-2.1	-1.1	-3.4	-2.5	-1.2	n.a.
Unleaded	Dec qtr 98	-2.1	-2.2	0.5	-2.0	-1.2	-3.4	-2.6	-1.4	n.a.

(a) State estimates are not comparable to national estimates from the June quarter 1995 due to revised methodology used in *Australian National Accounts, State Accounts* (Cat. no. 5242.0).

(b) Reference year for chain volume measures is 1996-97.

SELF-HELP ACCESS TO STATISTICS

DIAL-A-STATISTIC For current and historical Consumer Price Index data, call 1902 981 074.
For the latest figures for National Accounts, Balance of Payments, Labour Force, Average Weekly Earnings, Estimated Resident Population and the Consumer Price Index call 1900 986 400.
These calls cost 75c per minute.

INTERNET www.abs.gov.au

LIBRARY A range of ABS publications is available from public and tertiary libraries Australia wide. Contact your nearest library to determine whether it has the ABS statistics you require.

WHY NOT SUBSCRIBE?

PHONE +61 1300 366 323

FAX +61 3 9615 7848

CONSULTANCY SERVICES

ABS offers consultancy services on a user pays basis to help you access published and unpublished data. Data that are already published and can be provided within 5 minutes is free of charge. Statistical methodological services are also available. Please contact:

<i>City</i>	<i>By phone</i>	<i>By fax</i>
Canberra	02 6252 6627	02 6207 0282
Sydney	02 9268 4611	02 9268 4668
Melbourne	03 9615 7755	03 9615 7798
Brisbane	07 3222 6351	07 3222 6283
Perth	08 9360 5140	08 9360 5955
Adelaide	08 8237 7400	08 8237 7566
Hobart	03 6222 5800	03 6222 5995
Darwin	08 8943 2111	08 8981 1218

POST Client Services, ABS, PO Box 10, Belconnen ACT 2616

EMAIL client.services@abs.gov.au



2130380004997
ISSN 1320-808X

RRP \$15.50

© Commonwealth of Australia 1999

Produced by the Australian Bureau of Statistics